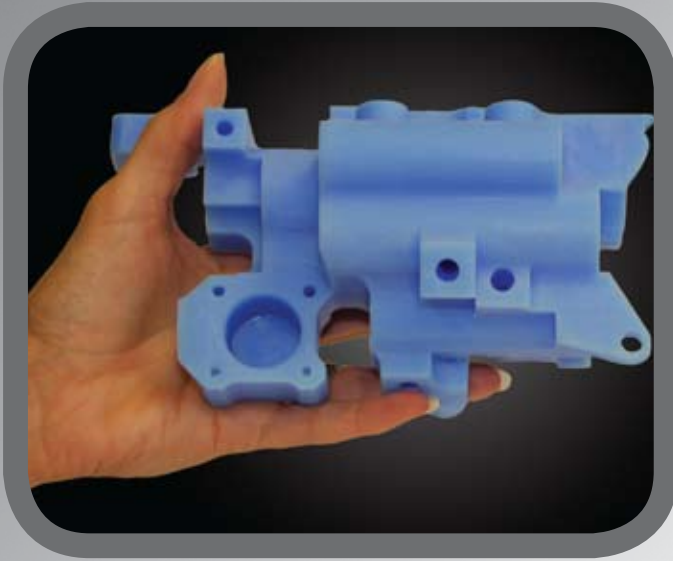


100%

# Real Wax Pattern Production System



ProJet™ CP 3000 Production System

## FEATURES

- High-definition print resolution
- RealWax™ pattern production with VisiJet® CP200 Wax Build Material
- Single-pass printhead with large build volume
- VisiJet® S200 dissolvable wax support Material
- Part nesting and stacking
- State-of-the-art ProJet™ Accelerator Software
- Compact, clean and quiet using environmentally friendly materials

## BENEFITS

- Ideal for general foundry casting direct from digital data
- Smooth surface finish for excellent final part results
- Best-in-class production speed and capacity
- Quick and easy support removal leaving smooth support side surfaces
- High-volume utilization of entire build volume for longer-run unattended operation
- Easy build submission and job queue management
- Office-friendly in size and operation

# ProJet™ CP 3000 Technical Specifications

Net Build Volume (xyz)	298 x 185 x 203mm (11.75 x 7.3 x 8 inches)
Resolution	328 x 328 x 700 DPI (xyz): 36µ z-layer thickness
Accuracy (typical)	0.001-0.002 inch (0.025-0.05 mm) per inch of part dimension accuracy may vary depending on build parameters, part geometry and size, part orientation, and post-processing methods
Build Material VisiJet® CP200 Wax Build Material	Wax material developed specifically for general casting and moldmaking patterns. Light blue. Non-toxic.
Support Material VisiJet® S200 Support Material	Non-toxic dissolvable wax support material
Material Packaging	Build materials in clean 0.38 kg cartridges, 8 per case (machine holds up to 10 cartridges with auto-indexing) Support materials in clean 0.405 kg cartridges, 8 per case (machine holds up to 10 cartridges with auto-indexing)
Electrical	100-127 VAC, 50/60 Hz, single-phase, 15A; 200-240* VAC, 50 Hz, single-phase, 10A
Dimensions (WxDxH) Modeler Crated Modeler Uncrated	960 x 1420 x 1670mm (38 x 56 x 66 inches) 737 x 1257 x 1504mm (29.0 x 49.5 x 59.2 inches)
Weight Modeler Crated Modeler Uncrated	371 kg (817 lb) 254 kg (560 lb)
ProJet™ Accelerator Software	Easy build job set-up, submission and job queue management Automatic part placement and build optimization tools Part stacking and nesting capability Extensive part file editing tools Automatic support generation Job statistics reporting tools
Network Compatibility	Network ready with 10/100 Ethernet interface
Client Hardware Recommendation	1.8 GHz with 1GB RAM (OpenGL support 64 mb video RAM) or higher
Client Operating System	Windows XP Professional
Input Data File Formats Supported	STL and SLC
Operating Temperature Range	18-28 °C (64-82 °F)
Noise	< 65 dBa estimated (at medium fan setting)
Certifications	CE marked
* Requires small external transformer supplied by 3D Systems in the provided country kit.	



333 Three D Systems Circle  
Rock Hill, SC 29730 USA  
Telephone +1(803) 326-4080  
TollFree (800) 889-2964

Warranty/Disclaimer: The performance characteristics of these products may vary according to product application, operating conditions, material combined with, or with end use. 3D Systems makes no warranties of any type, express or implied, including, but not limited to, the warranties of merchantability or fitness for a particular use.

© 2008 by 3D Systems, Inc. All rights reserved. Specifications subject to change without notice. ProJet™ and RealWax™ is a trademark, and VisiJet® and the 3D logo are registered trademarks of 3D Systems, Inc.

PN 70737 Issue Date Oct 2008